



P.O. Box 1719
 Corona, CA 92878
 Support: 951-493-7100
 www.aFeFilters.com

Intake Kit Installation Instructions: '03-'06 Ford F-Series Super Duty/ Excursion V8-6.0L (td)

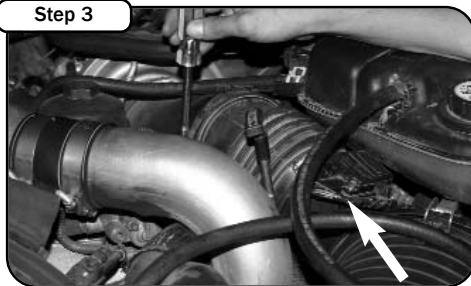
Kit Part #	51/54-11022/ 75-11022		Tools Required:	Part List: Stage 2 (cont.)	Part List: Stage 2 (cont.)
Make:	Ford		5/16" nut driver or slotted screwdriver	1 Bracket, Battery Cable Support	1 Grommet, Rubber MS35489-52
Model	Year	Engine	10mm socket or wrench	1 Tube, Rotomold	1 Grommet, Rubber MS35489-22
F250	'03-'06	V8-6.0L (td)	Ratchet and extension	1 Tube, Rotomold	2 Screw, Hex Head 5/16-18
F350	'03-'06	V8-6.0L (td)	13mm socket or wrench	4 Clamp #64	1 Gasket Mass sensor
Excursion	'03-'06	V8-6.0L (td)		1 Washer M6x13 Nut M6x1	2 Spacer, Nylon: 1/20Dx1/4IDx1/8L
			Part List: Stage 2	3 Nut, M6x1	2 Screw, 8-32x5/8"
			1 Air filter Replacement P/N (24-91036, Pro Dry S	2 Washer Wavy M6	1 Torq Bit
			21-90041 or Pro GUARD 7 72-90041)	2 Screw, Hex Head, M6x1x25	31 Seal, Trim
			1 Filter Housing	1 Coupling , Straight, 4"Dx2-1/2"L (Hi-Temp)	1 Grommet, Rubber: MS35485-73
			1 Bracket, Battery hold down	1 Coupling , Hump, 4"Dx3"L	1 Battery, pad urethane



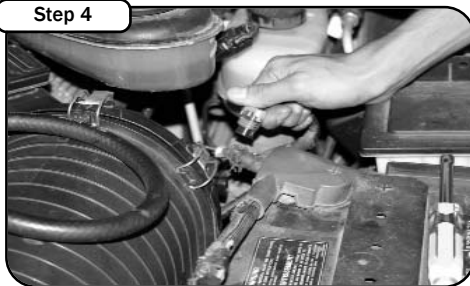
Step 1
 Complete kit. Make sure you have all the components before you begin your installation.



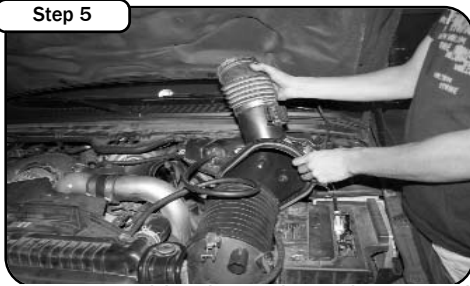
Step 2
 Complete stock intake.



Step 3
 Loosen the hose clamp on the turbo inlet. Carefully disconnect the MAF sensor wiring harness.



Step 4
 Disconnect the Filter Minder located on the back of the air filter box.



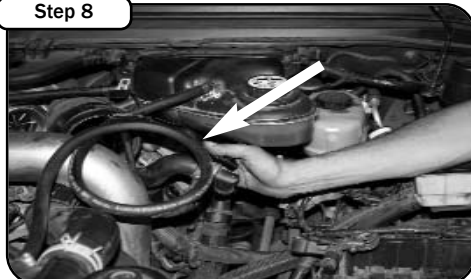
Step 5
 Undo the two retaining clips securing the air box outlet. Lift up and remove the turbo inlet tube and filter lid as one piece.



Step 6
 Remove the inlet portion of the air box out of the engine bay.



Step 7
 Disconnect passenger side battery terminals, remove battery cover and battery from engine compartment.



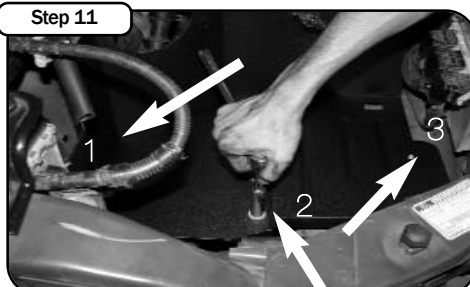
Step 8
 Using a 10mm socket or wrench remove tube support bracket from engine. Loosen clamp at turbo with a 5/16 nut driver or screwdriver.



Step 9
 Using a 13mm socket or wrench Remove all screws holding the battery tray in the vehicle.



Step 10
 Remove battery tray support bracket from vehicle using a 13mm socket or wrench.



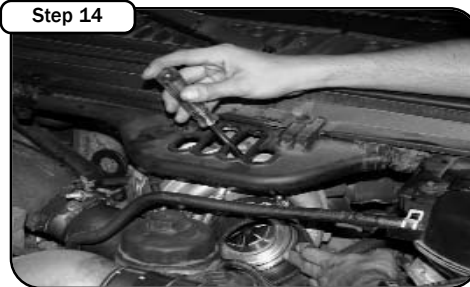
Step 11
 Install trim seal onto housing and install housing. 1. Use supplied 6mm washer and nut. 2. Re-use factory screws (2x) 3. Re-use factory screws (1x)



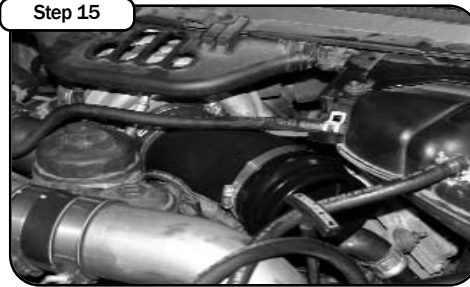
Step 12
 Install rubber grommet onto housing. With both batteries disconnected remove wire from terminal using a 10mm socket and pull wire through housing and reconnect.



Step 13
 1. Remove crank case breather from factory tube. 2. Place rubber grommet into hole and press crank case breather into grommet on tube.



Step 14
 Install grey high temp silicon coupling onto turbo. Tighten clamp at turbo.



Step 15
 Slide tube onto coupler and reconnect crank case breather. Install hump coupler onto end of tube.

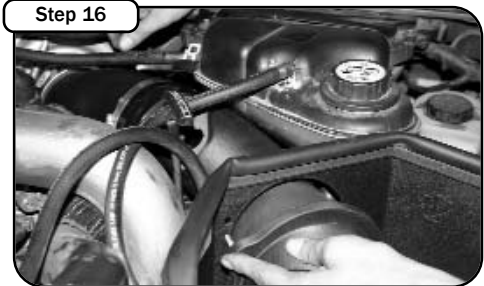
Note: Filter Cleaning and Re-oiling: When cleaning your aFe filter, be sure to use only aFe's "Restore Kit" (aFe P/N: 90-50001 blue oil aerosol, or aFe P/N: 90-50501 blue squeeze bottle oil or aFe P/N: 90-50000 gold oil aerosol, or aFe P/N: 90-50500 gold squeeze oil). Filter Replacement: Magnum FLOW PN: 24-91036 (black w/blue media), or Pro-GUARD 7™ PN: 72-90041 (black w/gold media), **Pro Dry S** 21-90041 (black w/white media) **Pro Dry S** cleaning: see cleaning instructions 06-00074



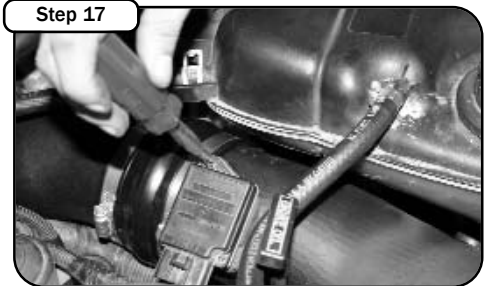
P.O. Box 1719
 Corona, CA 92878
 Support: 951-493-7100
 www.aFeFilters.com

Intake Kit Installation Instructions: '03-'06 Ford F-Series Super Duty/ Excursion V8-6.0L (td)

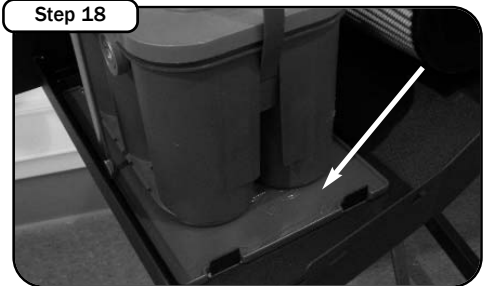
Kit Part # 51/54-11022/ 75-11022	Tools Required: 5/16" nut driver or slotted screwdriver 10mm socket or wrench Ratchet and extension 13mm socket or wrench	Part List: Stage 2 1 Air filter Replacement P/N (24-91036, Pro Dry S 21-90041 or Pro GUARD 7 72-90041) 1 Filter Housing 1 Bracket, Battery hold down 1 Bracket, Battery Cable Support 1 Tube, Rotomold 1 Tube, Rotomold 4 Clamp #64 1 Washer M6x13 Nut M6x1 3 Nut, M6x1	2 Washer Wavy M6 2 Screw, Hex Head, M6x1x25 1 Coupling , Straight, 4"Dx2-1/2"L (Hi-Temp) 1 Coupling , Hump, 4"Dx3"L 1 Grommet, Rubber MS35489-52 1 Grommet, Rubber MS35489-22 2 Screw, Hex Head 5/16-18 1 Gasket Mass sensor 2 Spacer, Nylon: 1/2ODx1/4IDx1/8L 2 Screw, 8-32x5/8" 1 Torq Bit Seal, Trim 1 Grommet, Rubber: MS35485-73 1 Pad, urethane
Make: Ford			
Model Year Engine			
F250 '03-'06 V8-6.0L (td)			
F350 '03-'06 V8-6.0L (td)			
Excursion '03-'06 V8-6.0L (td)			



Step 16
 Install tube and mount to housing using hardware provided. Tighten hump coupler where the two tubes meet.



Step 17
 Remove mass sensor and filter minder gasket from factory housing. Install sensor onto tube using gasket, spacers and screws supplied. Install filter minder onto tube. Use factory rubber grommet.



Step 18
 Install battery pad to housing, Sandwich battery cable support bracket and connect tab to plastic push pin on cable.



Step 19
 Install filter onto tube. Tighten clamp.



Step 20
 Your installation is now complete. Make sure you tighten all clamps and check all electrical connections. Re-check periodically.

Note: Filter Cleaning and Re-oiling: When cleaning your aFe filter, be sure to use only aFe's "Restore Kit" (aFe P/N: 90-50001 blue oil aerosol, or aFe P/N: 90-50501 blue squeeze bottle oil or aFe P/N: 90-50000 gold oil aerosol, or aFe P/N: 90-50500 gold squeeze oil).
 Filter Replacement: Magnum FLOW PN: 24-91036 (black w/ blue media), or Pro-GUARD 7™ PN: 72-90041 (black w/ gold media), Pro Dry S 21-90041 (black w/ white media) Pro Dry S cleaning: see cleaning instructions 06-00074