



INSTALLATION INSTRUCTIONS

VEHICLE APPLICATION

Year: **2003-2007.5**
Make: **DODGE**
Model: **RAM 2500/ 3500**
Engine: **5.9L TURBO DIESEL**

TOOLS REQUIRED

- 10mm Wrench & Socket
- 1/2" Wrench & Socket
- 7/16" Wrench & Socket
- 5/16" Nut Driver or Flat Blade Screwdriver
- Phillips Screwdriver, Pliers or Channel locks

S&B FILTER OIL

Your Air Filter P/N: KF-1035 is factory oiled and ready to use. When serviced it will require:

- 87g - Main Body
- 17g - Power Stack (Top)

NOTES

Kit may not fit with the following:

- Aftermarket Parts installed
- Body Lift or Lowering Kit
- Custom Hood
- Intercooler or Turbo upgrades

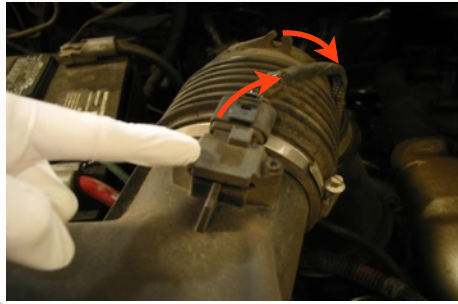
BEFORE YOU START

- Please read the entire product guide before proceeding.
- Ensure all components listed on page 4 are present.
- If you are missing any of the components, call our customer support at (909) 947-0015.
- Do not attempt to work on your vehicle while engine is hot.
- Make sure the engine is turned off and the vehicle is in Park or the Parking Brake is set.

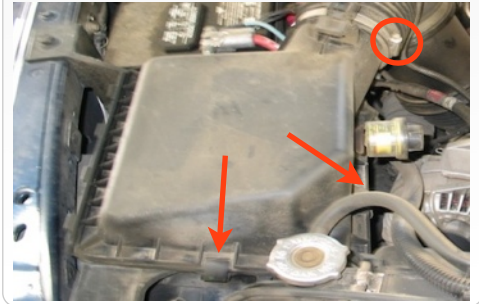
1. With the ignition switched off and the parking brake set, disconnect the negative battery cables on both batteries.



2. Disconnect the electrical connection for the Intake Air Temp. (IAT) Sensor, then unclip the wire loom from the tube.



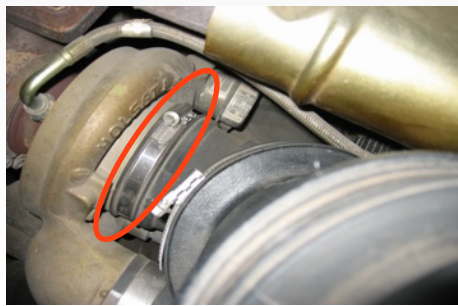
3. Loosen the hose clamp at air box lid and unsnap the clamps to remove the air box lid and stock air filter.



4. Remove the mounting nut then pull up and out on the lower half of the stock air box to remove it from the vehicle.



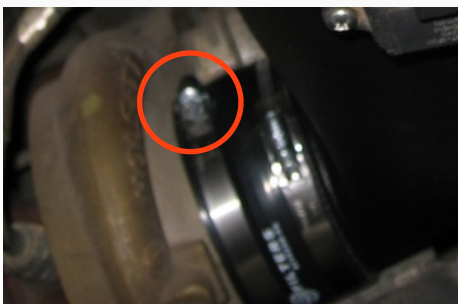
5. Loosen the hose clamp at the turbo inlet and remove the stock intake tube.



6. Remove the IAT sensor from the stock air box/ lid, use the supplied 8-32 Screws (E) and IAT Gasket (D) to secure the sensor to the S&B Intake Tube.



7. Install the Silicone Adapter (B) and two #64 Hose Clamps (A) onto the turbo, secure the first hose clamp around the turbo.



8. Place the Hump Adapter (G) over the end of Intake Tube (C), slide on until nearly flush with the end of the tube. Include both #88 Hose Clamps (F) but leave loose at this time.



9. Install the S&B Intake Tube assembly into the Silicone Adapter (B) and loosely secure the second #64 Hose Clamp (A).



SEE EXPLODED VIEW ON PAGE 4



INSTALLATION INSTRUCTIONS (continued)

10. Attach the Splash Guard (U) to the Air Box (P), use the supplied hardware to secure as instructed in the the exploded view.



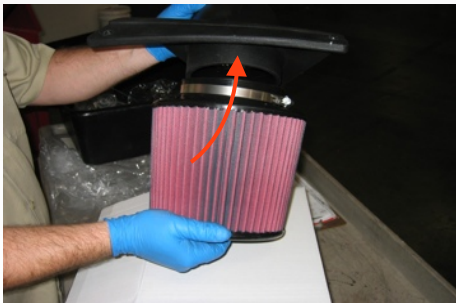
11. Apply a light amount of grease to the two prongs on the bottom of the box (P) before installing the Air Box assembly into the vehicle.



12. Secure the Air Box (P) using the stock nut removed in Step #4.



13. Install the S&B Air Filter (O) to the Filter Adapter (I) and secure the #80 Hose Clamp (H). Position so the smaller end of the oval pointing upward.



14. Carefully place the filter assembly into the Air Box trying not to ding or gouge the wire mesh. Rotate the Filter Adapter (I) into position and hook the clip into the Air Box.



15. Install the Clear Lid (N) using the supplied 5/16" S.S. Screws (K) and Rubber Washers (J) along with the 10-24 Screws (L) and SS Sealing Washers (M). This will secure the Filter Adapter to the Air Box as well.



16. Slide the Hump Adapter (G) over the Filter Adapter (I) and secure both #88 Hose Clamps (F). Tighten both #64 Hose Clamps (A) at the turbo at this time.



17. Reconnect the IAT Sensor.



18. Reconnect both batteries. Inspect your installation, make sure the kit is properly positioned and all fasteners are secure. Affix the CARB sticker near the intake kit. The installation is now complete.



SEE EXPLODED VIEW ON PAGE 4



INSTALLATION INSTRUCTIONS

PRECISION FILTER CLEANING & OILING



Order online today at www.sbfilters.com or through your local S&B distributor.

RELATED ITEMS FOR YOUR PURCHASE

- Air Scoop Assembly (S&B P/N: 75-5049)
- Air Filter Wrap (S&B P/N: WF-1023)
- Water Protection Scoop Wrap (S&B P/N: WF-1028)
- Snow Cap Plug and Mounting Bracket kit (S&B P/N: 75-5051)

PERFORMANCE TESTING

- Engage parking brake and start your engine. Listen for abnormal noises. If an air leak is detected, re-inspect hoses and connections as they may need to be repositioned and tightened.
- S&B FILTERS recommends that you keep your OE intake system in the event it is required in the future.
- In order to maintain your warranty, all connections and components must be checked periodically for alignment and for proper tension on all connections. Failure to do so may void your warranty.
- Use only S&B FILTERS cleaning and oil products to service your filter. Using any other brand oil and or cleaners on your S&B air filter may void your warranty.

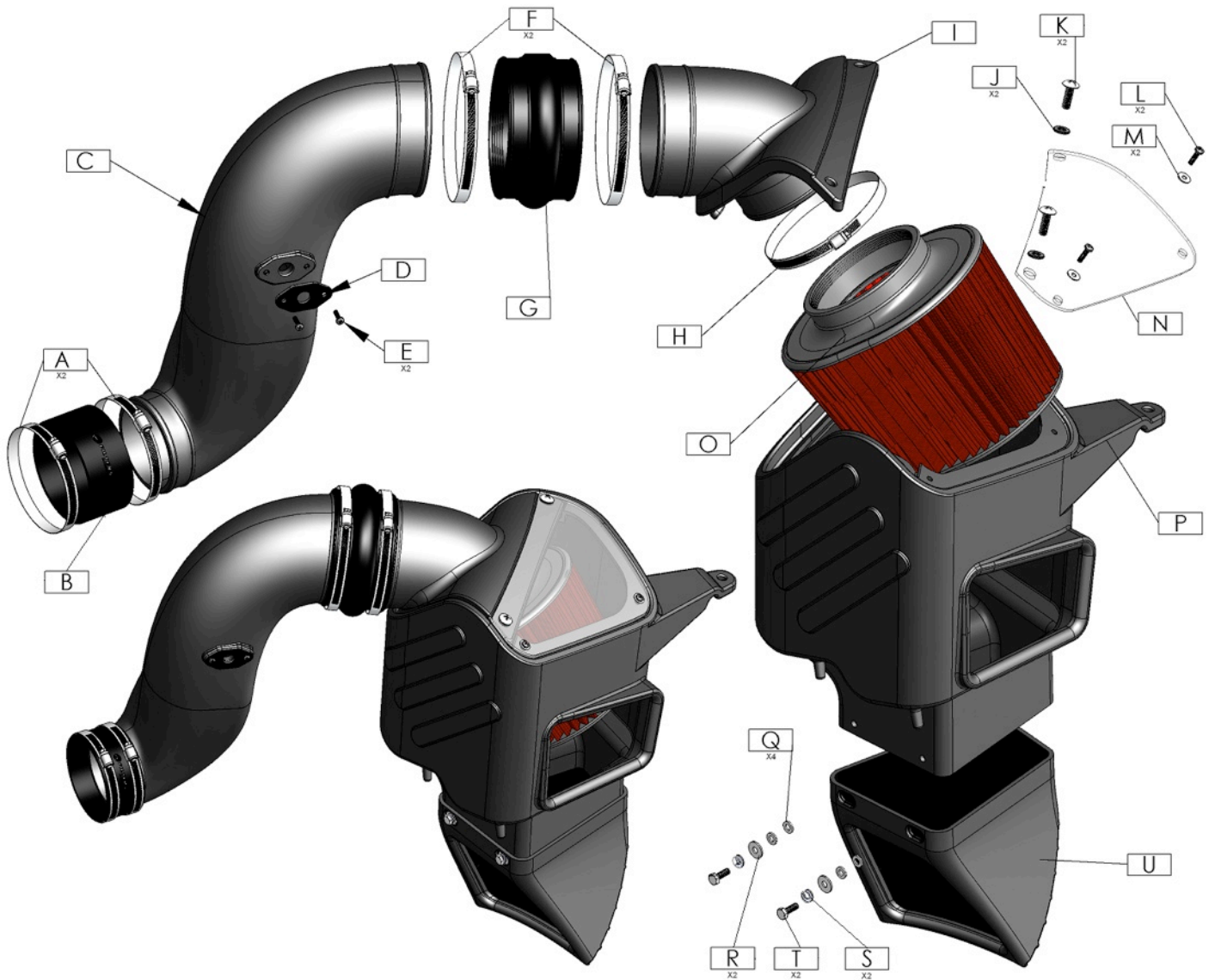
SEE EXPLODED VIEW ON PAGE 4

EMISSIONS STANDARD

The California Air Resource Board (CARB) requires that an E.O. identification label be applied to the vehicle in order to pass a smog check inspection when a Performance Intake Kit has been installed. You must place the E.O. label provided on or near the intake kit after installation so that a smog check technician can easily verify the E.O. number. As of April 2009, S&B has never had a product where CARB denied an exemption request; however, the exemption process with CARB can take as long as 18 months. Check the status of the exemption process by looking up a specific part number at www.sbfilters.com. The CARB Exemption number and/or status is listed under the Product Details section for each part number. If the status shows as "Pending," CARB has yet to issue an exemption. Products that have not been issued an EO number are street legal in most states, but may not be used on emission controlled vehicles in the state of California and are for off road use only. If you purchased your kit from S&B Filters directly, we will automatically mail you your Exemption Sticker when it is issued to us. If you purchased your kit from an authorized S&B Filters Dealer, log onto our web site and register to receive your Exemption Sticker.



EXPLODED VIEW



| ITEM | QTY. | DESCRIPTION | P/N |
|------|------|--------------------------------|------------|
| A | 2 | Hose Clamp, #64 | AG1018-00 |
| B | 1 | Silicone Adapter, 4.10" x 2.0" | AI1029S-00 |
| C | 1 | Intake Tube | AL1108-00 |
| D | 1 | IAT Sensor Gasket | AI1344-00 |
| E | 2 | S.S. Screw, 8-32 x 5/8" | AI1434-00 |
| F | 2 | Hose Clamp, #88 | AG1011-00 |
| G | 1 | Hump Adapter, 5.25" x 3.0" | AI1429-00 |
| H | 1 | Hose Clamp, #80 | AG1010-00 |
| I | 1 | Filter Adapter Tube | AL1108A-00 |
| J | 2 | Rubber Washer | AI1435-00 |
| K | 2 | S.S. Screw, 5/16-18 x 1.0" | AI1297-00 |
| L | 2 | S.S. Screw, 10-24 x 1/2" | AI1287-00 |
| M | 2 | S.S. Sealing Washer, 10-24 | AI1272-00 |
| N | 1 | Clear Box Lid | AI1442-00 |

| ITEM | QTY. | DESCRIPTION | P/N |
|------|------|-------------------------|-----------|
| O | 1 | S&B Air Filter | KF-1035 |
| P | 1 | S&B Air Box | AL1107-00 |
| Q | 4 | Spacer (Washer), 8mm | AI1402-00 |
| R | 2 | Washer, Flat, 1/4" | AI1073-00 |
| S | 2 | Washer, Lock, 1/4" | AI1309-00 |
| T | 2 | Hex Bolt, 1/4-20 x 3/4" | AI1068-00 |
| U | 1 | Splash Guard | AL1109-00 |
| | | | |
| | | | |
| | | | |
| | | | |
| | | | |
| | | | |
| | | | |
| | | | |
| | | | |