

VOLANT AIR INTAKE SYSTEM
 PART NO.: 158666
 INSTALLATION INSTRUCTIONS
 WWW.VOLANT.COM
 TECH SUPPORT: (909) 476-7225

| 158666 PARTS LIST | | | | | |
|-------------------|---------------------------|---|---------------------------|---|----------------------------|
| 1 | VOLANT FILTER BOX | 1 | 4" X 3" HUMPH HOSE | 3 | 1/4" WASHERS |
| 1 | VOLANT FILTER BOX LID | 1 | 3 3/4" X 3" SLEEVE | 4 | 1/4" X 7/8" FENDER WASHERS |
| 1 | VOLANT FILTER BOX ADAPTER | 4 | 6 MM-25 BOLTS | 1 | 1" O-RING |
| 1 | VOLANT AIR FLOW DUCT | 3 | 1/4"-20 BOLTS | 2 | 4 MM PLASTIC SCREWS |
| 1 | POWERCORE FILTER W/CLAMP | 7 | 1/4" LOCK WASHERS | 1 | 15866 MAF GASKET |
| 2 | #060 CLAMPS | 5 | 1/4"-20 TRUSS HEAD SCREWS | | |
| 2 | #072 CLAMPS | 5 | 1/4" RUBBER WASHERS | | |



NOTE: REMOVE THE ADHESIVE COVER FROM THE FENDER WELLS IN ORDER TO INSURE MAXIMUM AIR FLOW.

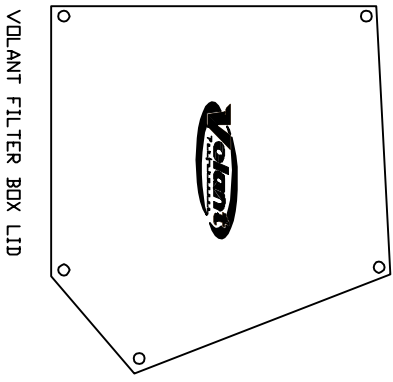
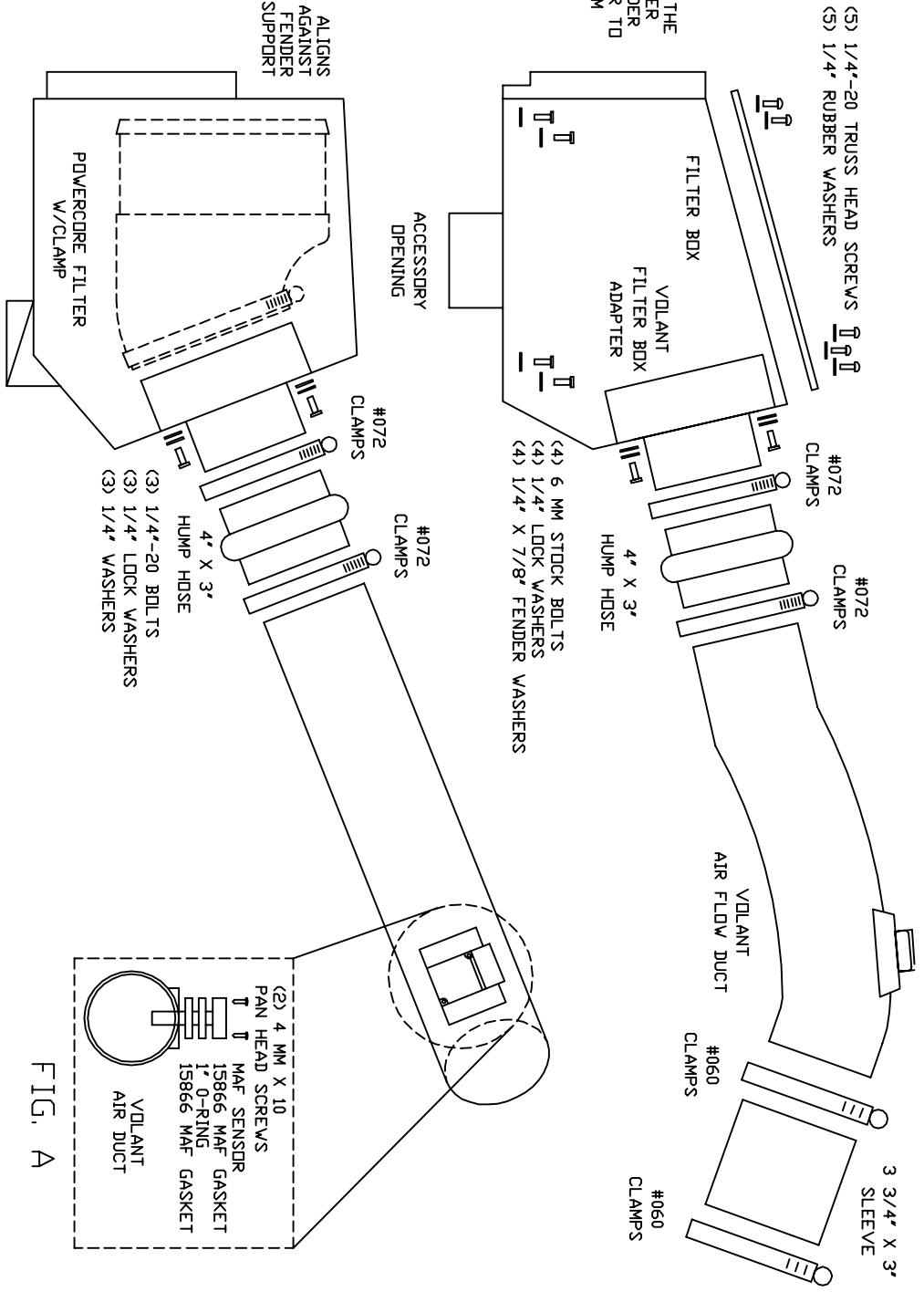


FIG. A